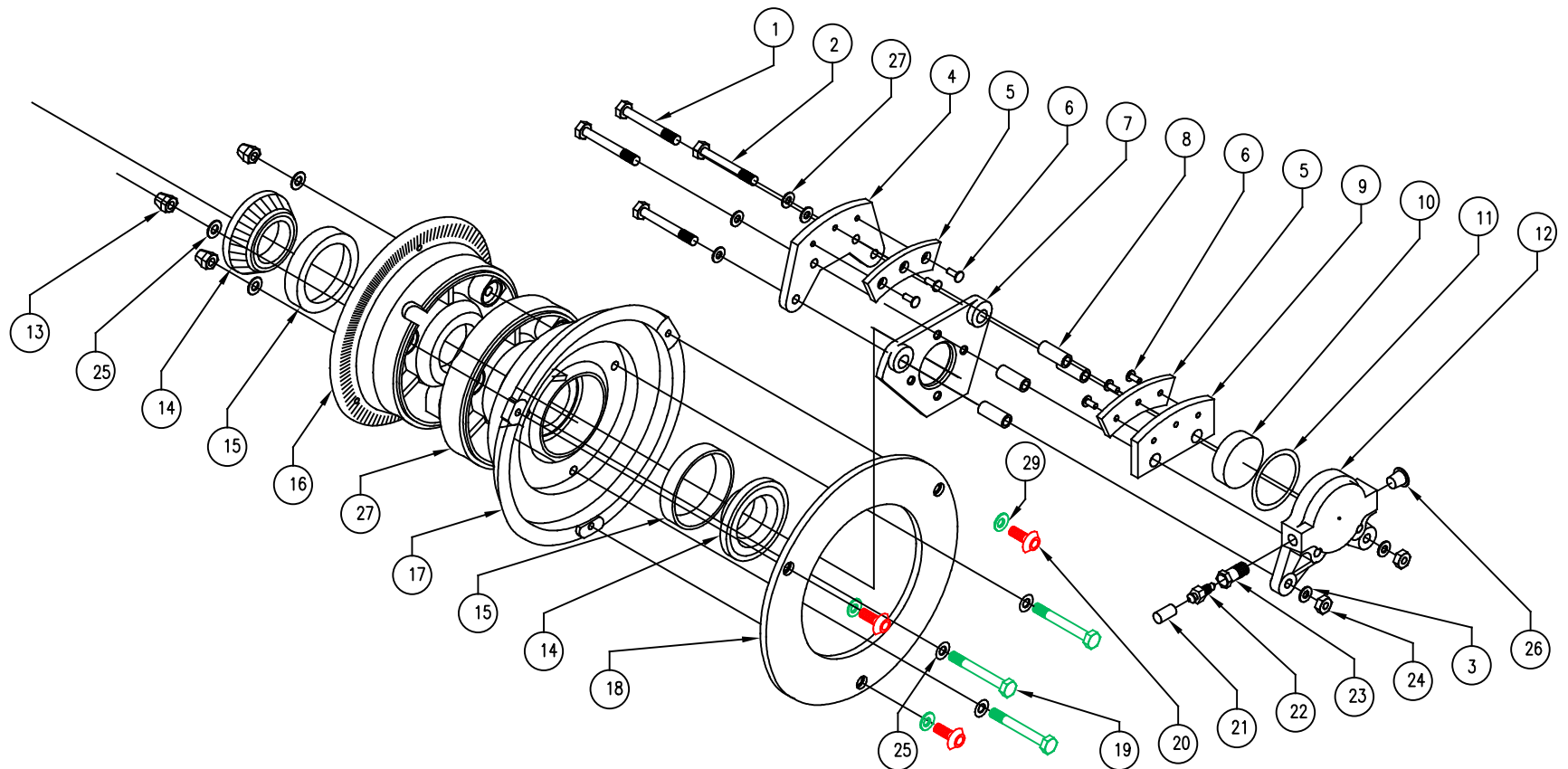
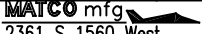


REV A CORRECT PART LIST TO BOM 8/02/02 AWH  
 REV B CORRECT TO BHCS AND NL WASHER 07/10/12 GRH



NO.	PART NAME	INVENTORY NO.	REQ'S	NO.	PART NAME	INVENTORY NO.	REQ'S	NO.	PART NAME	INVENTORY NO.	REQ'S
1	BOLT, HEXHEAD	.25-20X2HH	2	11	O-RING BUNA N	2-222	1	20	BHCS	.25-20X.62BHCS	3
2	BOLT	AN4-26A	2	12	PUCK HOUSING, 5/6" BRAKE	PH-8	1	21	DUST PLUG	BBS(S)ASY	1
3	WASHER	AN960-416L	6	13	FLEX LOCK NUT, .25-28	AN363-428	3	22	BRAKE BLEEDER VALVE	BBS(S)ASY	1
4	STATIONARY BRK SHOE, 5/6" BRK	SBS5	1					23	BRAKE BLEEDER SEAT	BBS(S)ASY	1
5	LINING, 5/6" BRAKE	M66-106	2	14	ROLLER BEARING, 1.25	LM6700LA	2	24	LOCK NUT	.25-28NYLOC	2
6	BRASS RIVET	4-6	6	15	BEARING RACE, 1.25	LM67010	2	25	WASHER	AN960-416	6
7	BRAKE PLATE, 1.38 AXLE	BPA1.38	1	16	VALVE HALF, W60, 1.25 BRNG	W60/1.25	1	26	CAPLUG	2X	1
8	SPACER, 5/6" BRAKE	BSP5	4	17	BRAKE HALF, W60, 1.25 BRNG	B60/1.25	1	27	WASHER, NORDLOC	NL1/4	2
9	MOVEABLE BRAKE SHOE, 5/6" BRAKE	MBS5	1	18	BRAKE DISC, 5/6" BRAKE	D5	1	28	SPACER, WHEEL	WHLF60S	1
10	PISTON, 5/6" BRAKE	PI-8	1	19	BOLT	AN4-26A	3	29	WASHER, NL	NLX6	1
3D-WH60		 2361 S 1560 West WOODS CROSS, UT 84087 (801) 335-0582		<b>F600</b>		DRAWN BY: GARY P. LANGFORD CHECKED BY:		SCALE: NONE DATE: SEPTEMBER 19, 1991		1 OF 1	