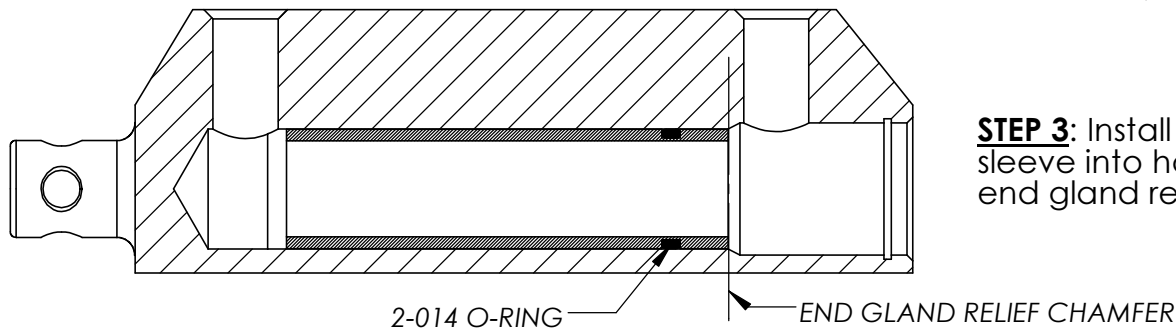
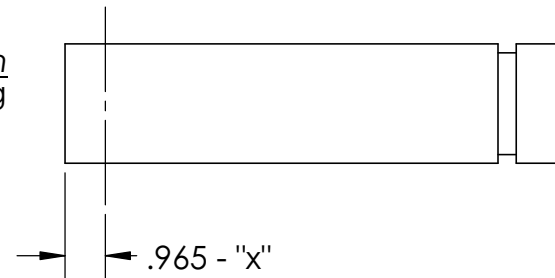


STEP 1: Without O-ring installed, insert intensifier sleeve into housing until firmly seated to determine length "x". Length "x" is determined by measuring the distance between the end of the intensifier sleeve and the end of the housing.

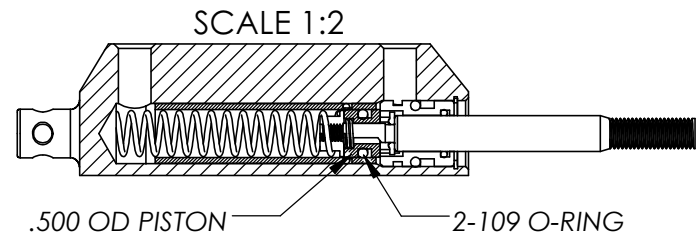
NOTE For models MC4-A,D,E, or G, sleeve may bottom on pedestal.

STEP 2: Remove .965 - "x" amount of material from the bottom end of the intensifier sleeve. Insert the sleeve into the housing without o-ring installed to test your length. Sleeve should be flush with the end gland relief chamfer (shown in step 3). Remove additional material if required.



STEP 3: Install the 2-014 o-ring and re-insert the intensifier sleeve into housing until it is flush (within 0.010") with the end gland relief chamfer (shown as a dashed line).

STEP 4: Remove the old piston and o-ring and install the new .500" OD piston with the 2-109 o-ring.



MATCO mfg



2361 S. 1560 West
Woods Cross, Utah 84087 USA

NOMENCLATURE
INTENSIFIER INSTALLATION INSTRUCTION

PART NUMBER
MC-4i

SCALE
1:1

TOLERANCES
(EXCEPT AS NOTED)
DO NOT SCALE DRAWING
LINEAR .XX = + .03
.XXX = + .01
ANGULAR + 1/2
CONCENTRIC + .01

MATERIAL
VARIES

DRAWING NO.
MC-4i

REVISION
NC

Est Wt. (lb)
0.14

DRAWN BY
Sally Christensen

FINISH
VARIES

DATE
9/28/2021

CHECKED BY

SHEET 1 OF 1
SHEET SIZE A