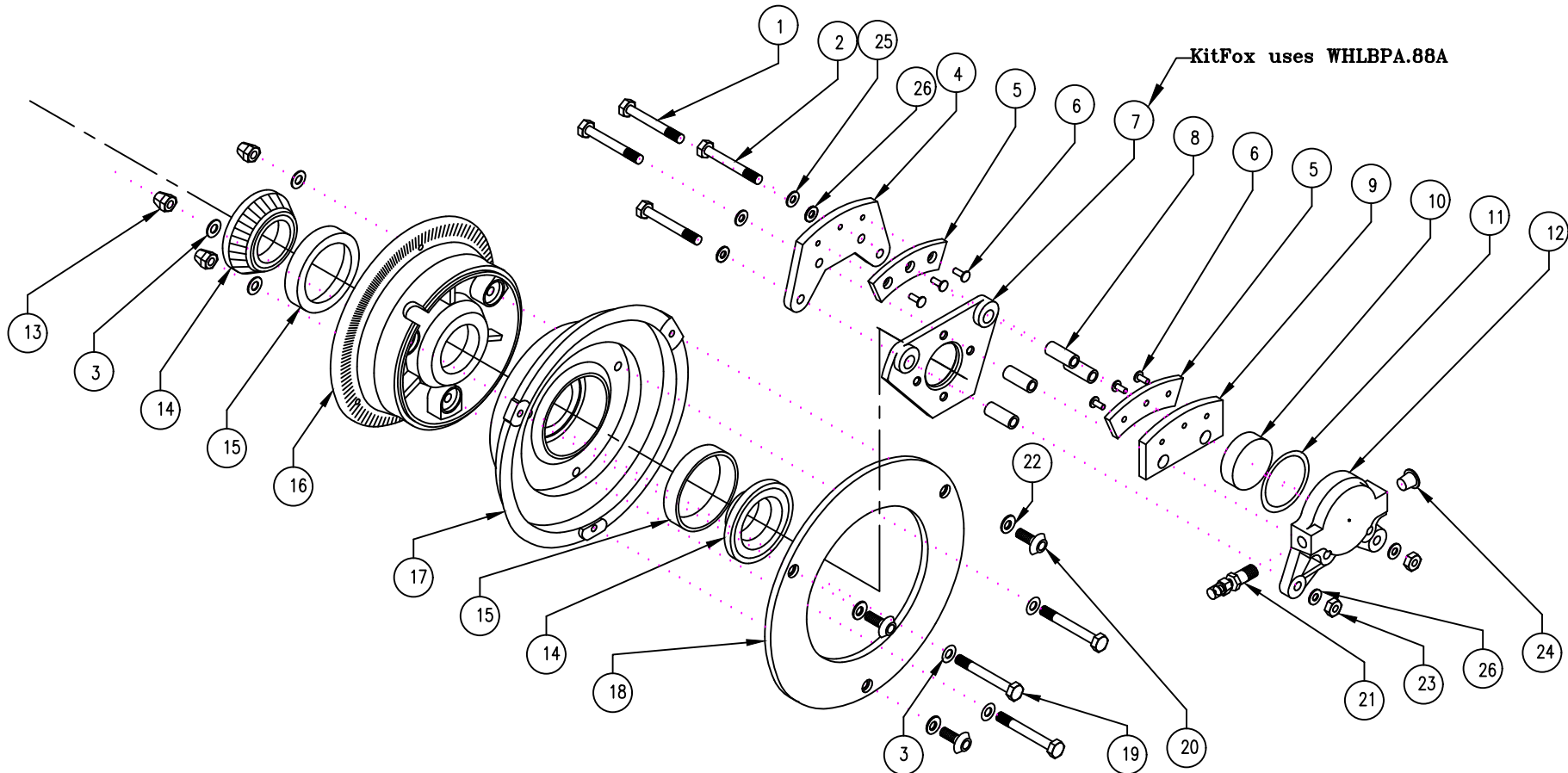


REV A CORRECT PART LIST TO BOM 8/02/02 AWH
 REV B CORRECT TO BHCS AND NL WASHER 07/10/12 GRH
 REV C CORRECT BHCS, NLX6, BBS(S)ASY 09/19/23 GRH



NO.	PART NAME	INVENTORY NO.	REQ'S	NO.	PART NAME	INVENTORY NO.	REQ'S	NO.	PART NAME	INVENTORY NO.	REQ'S
1	BOLT, HEXHEAD	.25-20X2HH	2	11	O-RING BUNA N	2-222	1	20	BHCS, .25-20	.25-20X.62BHCS	3
2	BOLT	AN4-20A	2	12	HOUSING,5/6" BRAKE Deep Bore	PH-8	1	21	ASY, Bleeder Sealed	BBS(S)ASY	1
3	WASHER	AN960-416	6	13	FLEX LOCK NUT, .25-28	AN363-428	3	22	WASHER, NORDLOC X Series	NLX6	3
4	STATIONARY BRK SHOE, 5/6" BRK	SBS5	1	14	ROLLER BEARING, 0.75	LM11900LA	2				
5	LINING, 5/6" BRAKE	M66-106	2	15	BEARING RACE, 0.75	LM11910	2	23	LOCK NUT	.25-28NYLOC	2
6	BRASS RIVET	4-6	6	16	VALVE HALF, W62, 0.75 BRNG	W62/0.75	1	24	CAPLUG	2X	1
7	BRAKE PLATE, .75 AXLE	BPA.75	1	17	BRAKE HALF, W62, 0.75 BRNG	B62/0.75	1	25	WASHER, NORDLOC	NL1/4	2
8	SPACER, 5/6" BRAKE	BSP5	4	18	BRAKE DISC, 5/6" BRAKE	D5	1	26	WASHER	AN960-416L	4
9	MOVEABLE BRAKE SHOE, 5/6" BRAKE	MBS5	1	19	BOLT	AN4-16A	3				
10	PISTON, 5/6" BRAKE Deep Bore	PI-8	1								

3D-WH62

MATCO mfg
 2361 S 1560 West
 WOODS CROSS, UT 84087 (801) 335-0582

W62

DRAWN BY: GARY P. LANGFORD
 CHECKED BY:

SCALE: NONE
 DATE: SEPTEMBER 19, 1991

REVISION:
 C