

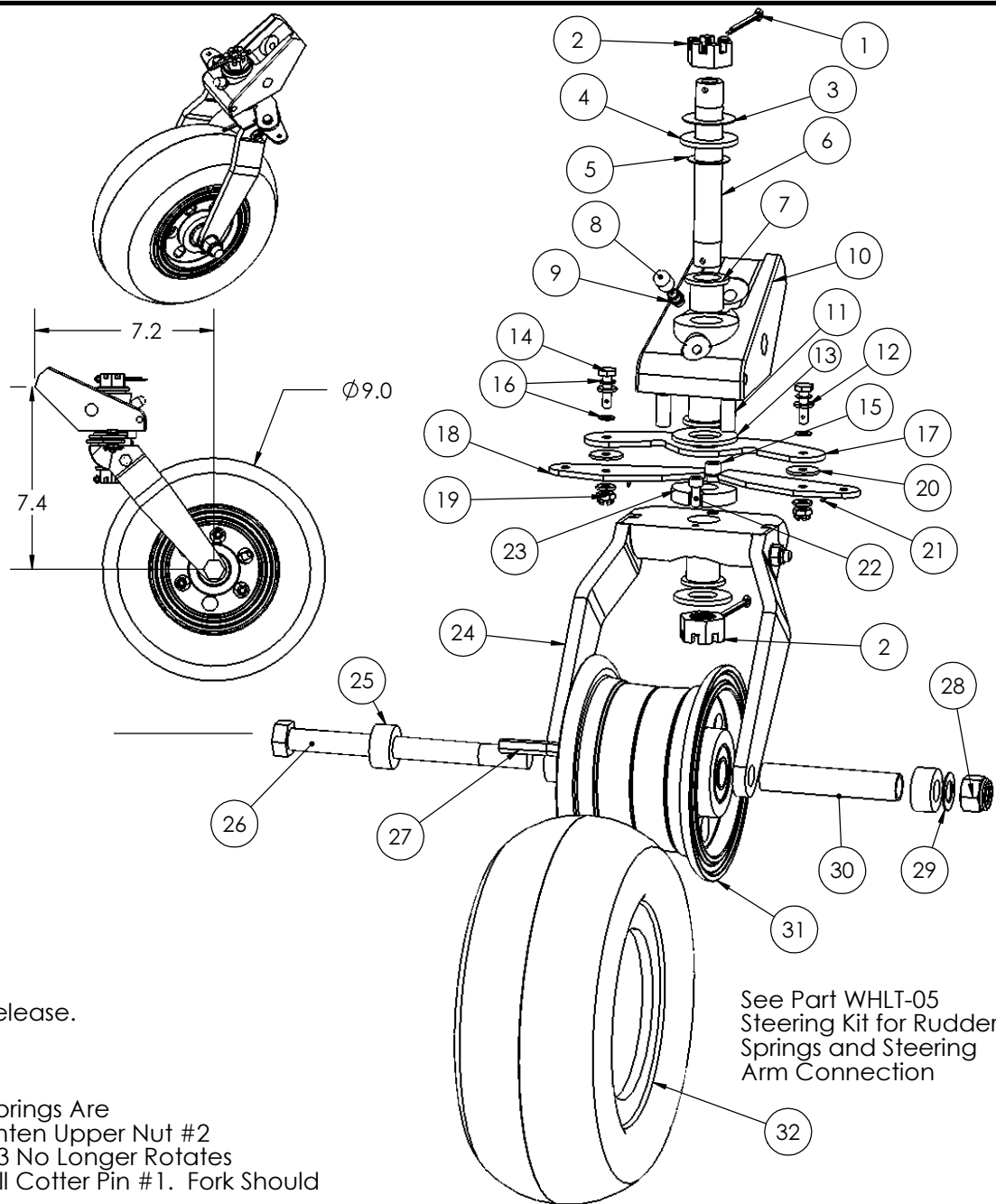
ITEM #	Part Number	Description	QTY.
1	MSC.11x1.5COTTERPI	PIN, COTTER ZINC	2
2	MSC.62-18HEXNUT/SL	NUT, HEX SLOTTED	2
3	MSCU321608	WASHER, BELLEVILLE	1
4	MSC.625SAE	WASHER, 5/8	2
5	MSCU625-0210	WASHER, CURVED	1
6	MSC.62-18X4.35(A)	AXLE, VERTICAL TAILWHEEL	1
7	WHLTW-19	BUSHING, HAT	3
8	MSCVC-250-8	COVER, BLEEDER BLK	1
9	MSCMC7-4	FITTING, GREASE	1
10	WHLTWBE1.5	BASE, TAIL WHEEL	1
11	WHLBSP4	SPACER, 4"/UL BRAKE	2
12	MSCAN960-10	WASHER, AN960	4
13	WHLTW-4	WASHER, BRONZE	1
14	MSCAN3-6	BOLT, HEX DRILLED	2
15	MSC.25-20x.50SHCS	BOLT, SHCS .25-20X.50	1
16	MSCB0375-020	WASHER, BELLEVILLE	4
17	WHLT-02	ARM, TAIL WHEEL	1
18	WHLT-03	Wing, Tail Wheel	2
19	MSCAN310-3	NUT, CASTLE	2
20	MSC.750x.190x.062W	WASHER, BRONZE	2
21	MSC.0625X.50COTTER	PIN, COTTER ZINC	2
22	MSC10-24x.50SHCS	SCREW, SOCKET HEAD	1
23	WHLTW-21S	BUSHING, SLOTTED PIE SHAPED	1
24	WHLTWD-8WFHD	FORK ASSEMBLY, 8WFHD	1
25	WHLT8DSL	SPACER, T8D	2
26	MSC.50-13X5.75HH	BOLT, HEX	1
27	TIRTU3.00-4	TUBE, 3.00-4	1
28	MSC.50-13NYLOCK	NUT, NYLOCK	1
29	MSCAN960-816L	WASHER	1
30	WHLT8SLL	SPACER, T8SLL	1
31	NW40EE	NOSEWHEEL 4" .62 BRG	1
32	TIRT9X3.50-4	TIRE, 9X3.50-4	1

Note: Alternate Wing Available to Provide Earlier Steering Release.

Release with Standard WHLT-03 = +/- 45 Deg

Release with Optional WHLT-03A = +25 Deg (May be Hand
Ground to Release from 25 to 50 Deg)

TO SET PRELOAD IN VERTICAL AXLE #6: Be certain #3 & #5 Springs Are
Installed. Seat Lower Nut #2 Fully & Insert Cotter Pin #1. Tighten Upper Nut #2
Slowly Until All Freeplay of Springs are removed and Fork #23 No Longer Rotates
Freely. Loosen Upper Nut #2 1-4 Locking Features and Install Cotter Pin #1. Fork Should
Rotate With Resistance Around Complete Rotation.



MATCO mfg



2361 S 1560 West
Woods Cross, UT 84087

NOMENCLATURE
TAILWHEEL, 8" DUAL FORK WIDE

MATERIAL
VARIES

PART NUMBER
WHLT-8WD

DRAWING NO.
TAIL/3D-T8WD

SCALE
1:4

REVISION
E Est Wt. (lb)
8.55

TOLERANCES
(EXCEPT AS NOTED)

DO NOT SCALE DRAWING
LINEAR .XX = + .03
.XXX = + .01
ANGULAR + 1/2
CONCENTRIC + .01

DRAWN BY
George R. Happ

FINISH

DATE
3/1/2011

CHECKED BY

SHEET 1 OF 1
SHEET SIZE A