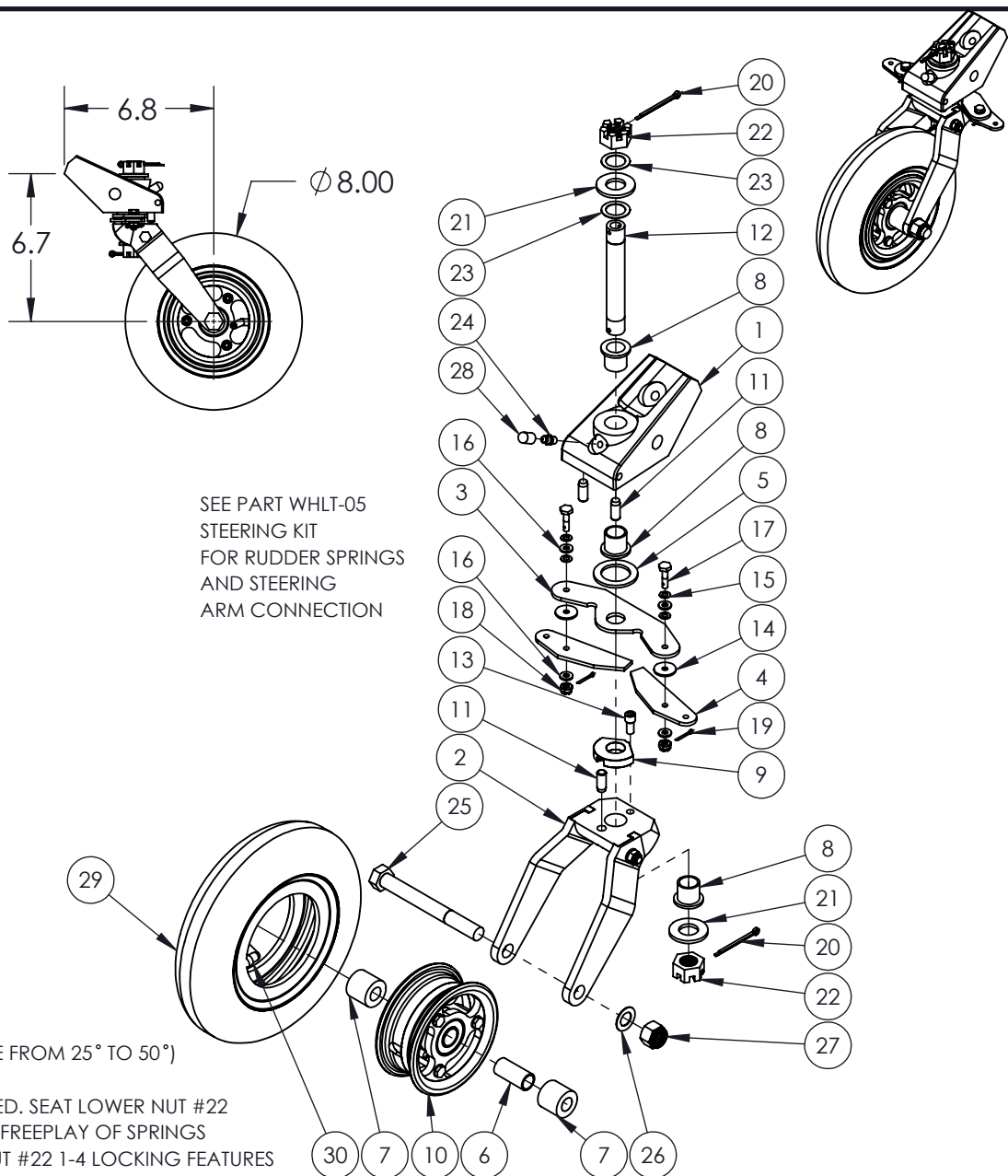


ITEM NO.	PART NUMBER	PART NAME	QTY.
1	WHLTWBE1.5	BASE, TAILWHEEL	1
2	WHLTWD-8LFHD	FORK ASSEMBLY, 8LFHD	1
3	WHLT-02	ARM, TAIL WHEEL	1
4	WHLT-03	WING, TAIL WHEEL	2
5	WHLTW-4	WASHER, BRONZE	1
6	WHLT6SL	SLEEVE, TAIL T-6P	1
7	WHLT7DSL	SPACER, T7D	2
8	WHLTW-19	BUSHING, HAT	3
9	WHLTW-21S	BUSHING, POCKETED PIE	1
10	WHLTW37	WHEEL, TAIL 3.7"	1
11	WHLBSP4TW	SPACER, TAILWHEEL BASE	3
12	MSC.62-18X4.35(A)	AXLE, VERTICAL TAILWHEEL	1
13	MSC.25-20X.50SHCS	BOLT, SHCS .25-20X.50	1
14	MSC.750X.190X.062W	WASHER, BRONZE	2
15	MSCB0375-020	WASHER, BELLEVILLE	4
16	MSCAN960-10	WASHER, AN960	4
17	MSCAN3-6	BOLT, HEX DRILLED	2
18	MSCAN310-3	NUT, CASTLE	2
19	MSC.0625X.50COTTER	PIN, COTTER ZINC	2
20	MSC.11X1.5COTTERPI	PIN, COTTER ZINC	2
21	MSC.625SAE	WASHER, 5/8	2
22	MSC.62-18HEXNUT/SL	NUT, HEX SLOTTED	2
23	MSCU625-0210	WASHER, CURVED	2
24	MSCMC7-4	FITTING, GREASE	1
25	MSC.50-13X4.50HH	BOLT, HEX	1
26	MSCAN960-816L	WASHER	1
27	MSC.50-13NYLOCK	NUT, NYLOCK	1
28	MSCVC-250-8	COVER, BLEEDER BLK	1
29	TIRT200X50	TIRE, 200X50	1
30	TIRTU200X50	TUBE, 200X50	1

NOTE: ALTERNATE WING AVAILABLE TO PROVIDE EARLIER STEERING RELEASE.
RELEASE WITH STANDARD WHLT-03= $\pm 45^\circ$
RELEASE WITH OPTIONAL WHLT-03A= $\pm 25^\circ$ (MAY BE HAND GROUND TO RELEASE FROM 25° TO 50°)

TO SET PRELOAD IN VERTICAL AXLE #12: BE CERTAIN #23 SPRINGS ARE INSTALLED. SEAT LOWER NUT #22 FULLY AND INSERT COTTER PIN #20. TIGHTEN UPPER NUT #22 SLOWLY UNTIL ALL FREEPLAY OF SPRINGS ARE REMOVED AND FORK #2 NO LONGER ROTATES FREELY. LOOSEN UPPER NUT #22 1-4 LOCKING FEATURES AND INSTALL COTTER PIN #20. FORK SHOULD ROTATE WITH SOME RESISTANCE AROUND COMPLETE ROTATION.



MATCO ALS

2361 S 1560 WEST
WOODS CROSS, UT 84087 USA



NOMENCLATURE
8" TAILWHEEL, PNEUMATIC, DUAL FORK, LIGHTWEIGHT

MATERIAL
VARIES

DATE
10/1/2025

PART NUMBER
WHLT-8LD

DRAWING NO.
TAIL/WHLT-8LD
CHECKED BY
GEORGE R. HAPP

SHEET 1 OF 1
SHEET SIZE A

SCALE
1:6
REVISION
E
Est Wt. (lb)
5.367

TOLERANCES
(EXCEPT AS NOTED)
DO NOT SCALE DRAWING
LINEAR .XX = $\pm .03$
.XXX = $\pm .01$
ANGULAR = $\pm 1/2$
CONCENTRIC = $\pm .01$

DRAWN BY
KYLE BEMENT

FINISH
VARIES