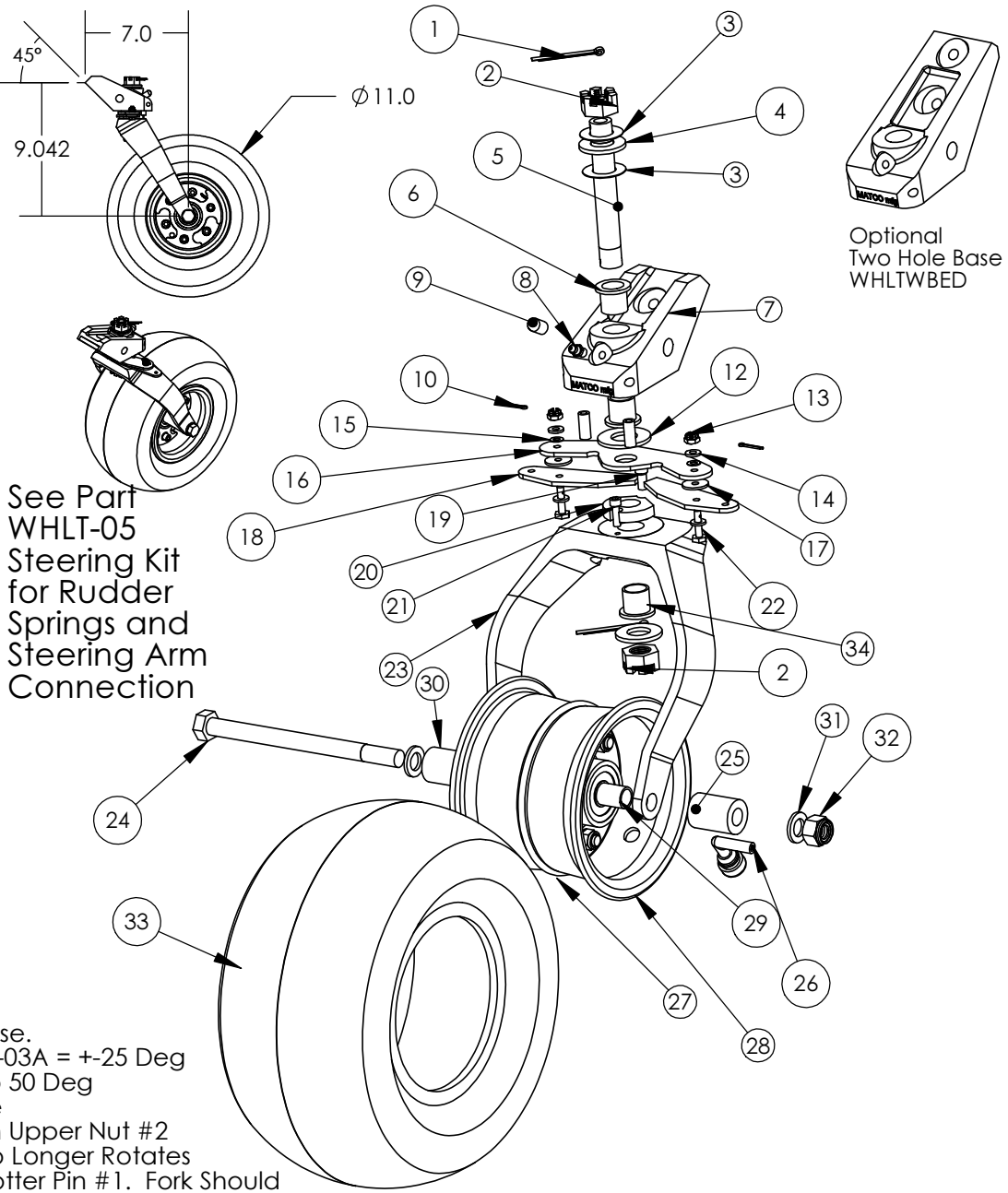


ITEM #	Part Number	Description	QTY.
1	MSC.11x1.5COTTERPI	PIN, COTTER ZINC	2
2	MSC.62-18HEXNUT/SL	NUT, HEX SLOTTED	2
3	MSCU321 608	WASHER, BELLEVILLE	2
4	MSC.625SAE	WASHER, 5/8	2
5	MSC.62-18X4.35(A)	AXLE, VERTICAL TAILWHEEL	1
6	WHLTW-19	BUSHING, HAT	2
7	WHLTWBE	BASE, EXTRUDED 1.75	1
8	MSCMC7-4	FITTING, GREASE	1
9	MSCVC-250-8	COVER, BLEEDER BLK	1
10	MSC.0625X.50COTTER	PIN, COTTER ZINC	2
11	WHLBSP4	SPACER, 4"/UL BRAKE	2
12	WHLTW-4	WASHER, BRONZE	1
13	MSCAN310-3	NUT, CASTLE	2
14	MSCAN960-10	WASHER, AN960	4
15	MSCB0375-020	WASHER, BELLEVILLE	2
16	WHLT-02	ARM, TAIL WHEEL	1
17	MSC.750x.190x.062W	WASHER, BRONZE	2
18	WHLT-03	Wing, Tail Wheel	2
19	MSC.25-20x.50SHCS	BOLT, SHCS .25-20X.50	1
20	WHLTW-21S	BUSHING, SLOTTED PIE SHAPED	1
21	MSC10-24x.62SHCS	SCREW, SOCKET HEAD	1
22	MSCAN3-6	BOLT, HEX DRILLED	2
23	TWD-11F	FORK, MACHINED DUAL 11D	1
24	MSC.50-13X6.5HH	BOLT, HEX	1
25	WHLT11DSL	SPACER, T11D SHORT	1
26	MSCPVR70M	STEM, VALVE 90 Deg	1
27	MSC2-342	O-RING, BUNA -N	1
28	MH5N-S	WHEEL, MH NOSE	1
29	WHLT11SL	SPACER, T11SL	1
30	WHLT11DSLL	SPACER, T11D LONG	1
31	MSC12MMWASHER	WASHER, 12mm, Thick	2
32	MSC.50-13NYLOCK	NUT, NYLOCK	1
33	TIRT11X6.00-5	TIRE, 11X6.00-5	1
34	WHLTW-19FE	BUSHING, HAT FE	1

See Part  
WHLT-05  
Steering Kit  
for Rudder  
Springs and  
Steering Arm  
Connection



Note: Alternate Wing Available to Provide Earlier Steering Release.  
Release with Standard WHLT-03 = +/- 45 Deg with Optional WHLT-03A = +/- 25 Deg  
Optional WHLT-03A May be Hand Ground to Release from 25 to 50 Deg  
TO SET PRELOAD IN VERTICAL AXLE #5: Be certain #3 Springs Are  
Installed. Seat Lower Nut #2 Fully & Insert Cotter Pin #1. Tighten Upper Nut #2  
Slowly Until All Freeplay of Springs are removed and Fork #22 No Longer Rotates  
Freely. Loosen Upper Nut #2 1-4 Locking Features and Install Cotter Pin #1. Fork Should  
Rotate With Resistance Around Complete Rotation.

<b>MATCO mfg</b>		NOMENCLATURE TAILWHEEL, 11" DUAL FORK		PART NUMBER WHLT-11D		SCALE 1:5		TOLERANCES (EXCEPT AS NOTED)	
2361 S 1560 West Woods Cross, UT 84087 USA		MATERIAL VARIES		DRAWING NO. TAIL/3D-T-11D		REVISION F		Est Wt. (lb) 9.77	
DRAWN BY George R. Happ		FINISH		DATE 3/16/2017		CHECKED BY		DO NOT SCALE DRAWING	
						SHEET 1 OF 1		LINEAR .XX = + .03	
						SHEET SIZE A		.XXX = + .01	
								ANGULAR + 1/2	
								CONCENTRIC + .01	