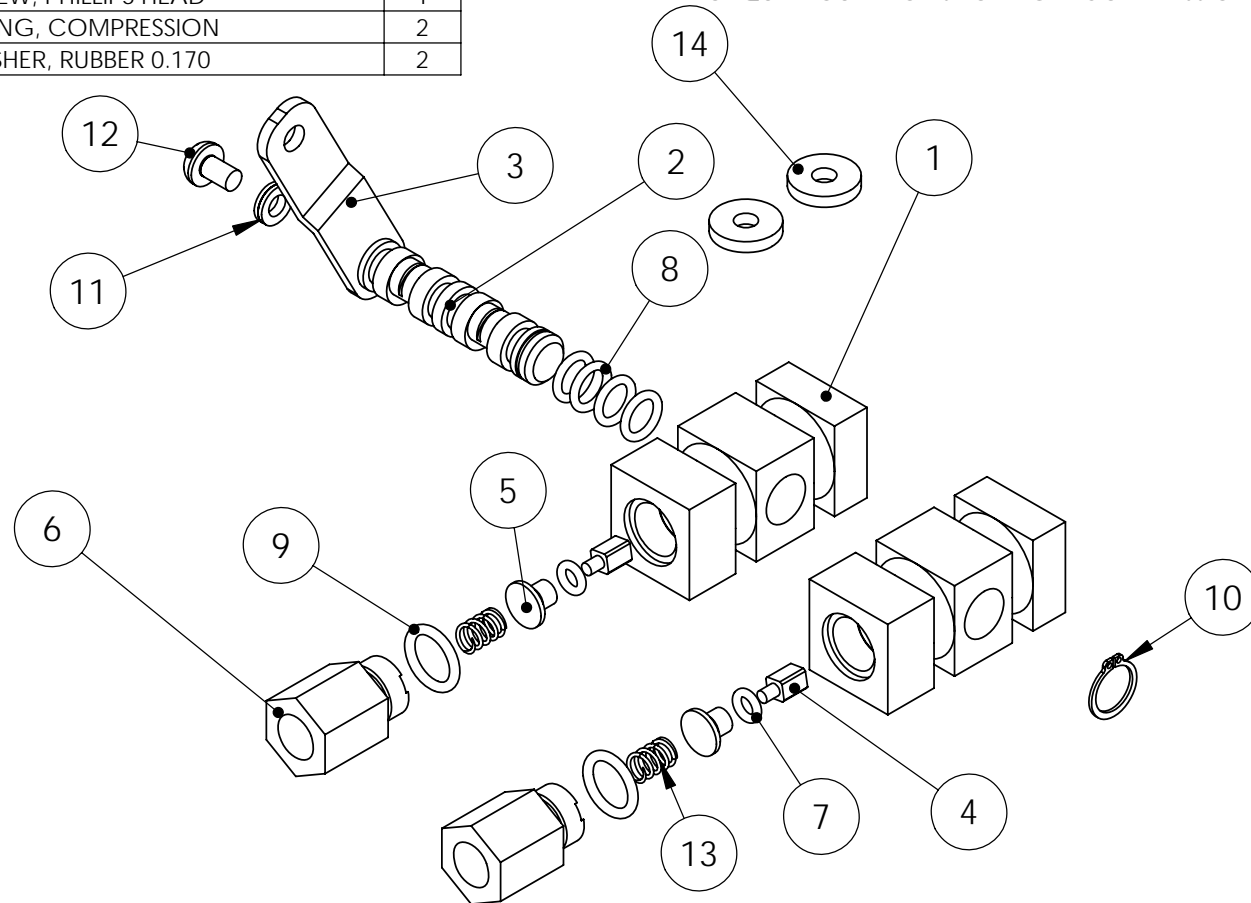


ITEM #	Part Number	Description	QTY.
1	PVS-B	BODY, PV-S	2
2	PVD-C	SHAFT, CAM	1
3	PV1-L	LEVER, PARK BRAKE	1
4	PVS-3	PIN, SQR	2
5	PV1-P	VALVE, POPPET	2
6	MSC0502-4-2(A)	FITTING, ADAPTER	2
7	MSC2-006	O-RING, BUNA -N	2
8	MSC2-010	O-RING, BUNA -N	4
9	MSC3-904	O-RING, BUNA -N	2
10	MSC3100-37	RING, SNAP EXTERNAL	1
11	NL4	WASHER SET, NORLOC	1
12	MSC8-32X.25PHP	SCREW, PHILLIPS HEAD	1
13	MSCLC-026BC-03M	SPRING, COMPRESSION	2
14	MSC.170X.50X.1NEOWASHER	WASHER, RUBBER 0.170	2

NOTE: This unit requires Mil-H-5606 or compatible fluid

THESE WASHERS TO BE USED UNDER MOUNTING BOLT HEADS.
TORQUE MOUNT BOLTS FOR LIGHT COMPRESSION OF WASHER



MATCO mfg

2361 S 1560 West
Woods Cross, UT 84087 USA



NOMENCLATURE
VALVE, PARK

MATERIAL
VARIES

PART NUMBER
PVPV-D

DRAWING NO.
PARK/3D PVPV-D

SCALE
1:1.3

REVISION
A Est Wt. (lb)
0.284

TOLERANCES
(EXCEPT AS NOTED)
DO NOT SCALE DRAWING
LINEAR .XX = + .03
.XXX = + .01
ANGULAR ± 1/2
CONCENTRIC ± .01

DRAWN BY
George R. Happ

FINISH

DATE
7/20/2008

CHECKED BY

SHEET 1 OF 1
SHEET SIZE A