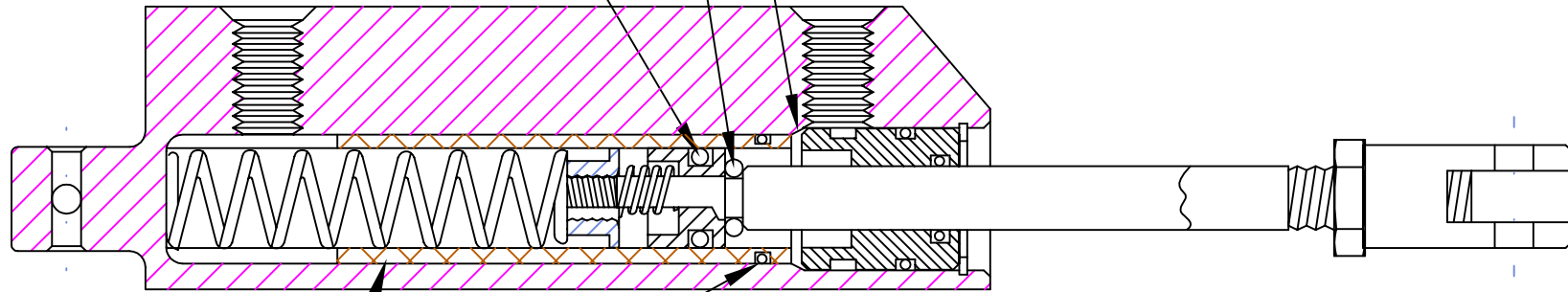


MCP.50(B) PISTON
 MSC2-109 O-RING
 (2-012 for 0.098 slot)

MSC600-010-10 STAT-O-SEAL

END GLAND CHAMFER



MSC2-014 O-RING

MC-19 SLEEVE INSTALLS IN CYLINDER

1. WITHOUT O-RING INSTALLED, INSERT INTENSIFIER SLEEVE INTO HOUSING UNTIL FIRMLY SEATED TO TEST LENGTH.
2. REMOVE MATERIAL FROM BOTTOM END OF SLEEVE SO THAT TOP END (NEAREST O-RING) IS FLUSH WITH END GLAND RELIEF CHAMFER (WITHIN .010). INSTALL O-RING AND INSERT SLEEVE.
3. REMOVE OLD PISTON AND INSTALL NEW .500 OD PISTON.

NOTE - SLEEVE MAY BOTTOM ON PEDESTAL FOR MC4-A

MATCOmfg

2361 S 1560 West
 WOODS CROSS, UT 84087

DRAWN BY
 G. HAPP

FINISH
 NONE

DATE
 OCT-8-01

NOMENCLATURE
 INSTALLATION, INTENSIFIER MC-4

MATERIAL

PART NUMBER

DRAWING NO.
 1-313027

CHECKED BY SHEET 1 OF 1
 SHEET SIZE A

SCALE

REVISION
 A

TOLERANCES
 (EXCEPT AS NOTED)
 DO NOT SCALE DRAWING
 LINEAR .XX = ±.03
 .XXX = ±.01
 ANGULAR ±1/2
 CONCENTRIC ±.01