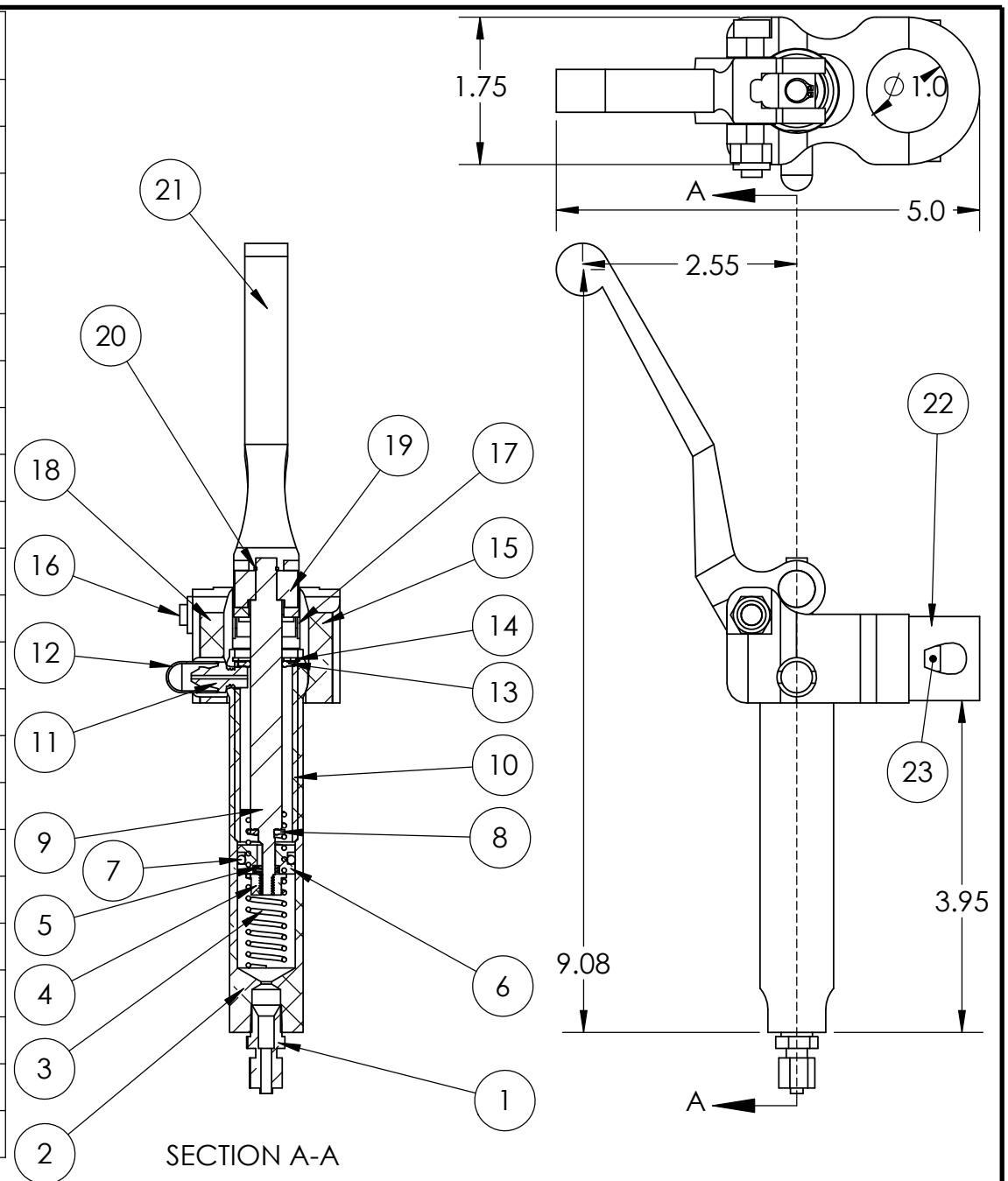


ITEM #	Part Number	Description	QTY.
1	MSC168P	STRAIGHT FITTING	1
2	MC7H	MC7 HOUSING	1
3	MSCC0480-055-3000M	SPRING, 3 INCH	1
4	MC-16	SPRING GUIDE	1
5	MSCC0300-026-0440M	SPRING, VALVE	1
6	MCP.688(B)	PISTON, HIGH VOLUME	1
7	MSC2-112	O-RING, BUNA -N	1
8	MSC600-0101-10	SEAL, STAT-O	1
9	MC7-1	SHAFT, MC-7	1
10	MC7SL	MC-7 SLEEVE	1
11	MSCMC7-4	FITTING, VENT	1
12	MSCVC-250-8	COVER, BLEEDER BLK	1
13	MSC600-0101-.375	SEAL, STAT-O	1
14	3000-X75	SNAP RING	1
15	MC7YOKE	YOKE, MC-7	1
16	MSC.31-18X1.25SHSB	BOLT, SHOULDER	1
17	MSCAN960-516L	WASHER, AN960	2
18	MSC.25-28NYLOCK	NUT, NYLOCK	1
19	MC7-PPIN	PIN, PIVOT	1
20	5100-25	SNAP RING	1
21	MCMC7-L	LEVER, MC-7	1
22	MC6-2	CLAMP	1
23	MSC10-24x.62SHCS	SCREW, SOCKET HEAD	2



MATCO mfg 2361 S. 1560 West Woods Cross, Utah 84087 USA		NOMENCLATURE HAND OPERATED MASTER CYLINDER		PART NUMBER MC-7		SCALE 1:2		TOLERANCES (EXCEPT AS NOTED)	
DRAWN BY Sally Christensen		FINISH VARIES		DATE 12/14/2021		CHECKED BY		DO NOT SCALE DRAWING LINEAR .XX = + .03 .XXX = + .01 ANGULAR ± 1/2 CONCENTRIC ± .01	
MATERIAL VARIES				DRAWING NO. MASTER/MC-7 Install		REVISION F		Est Wt. (lb) 0.75	
				SHEET 1 OF 1		SHEET SIZE A			